

DIAMOND POUF



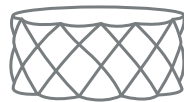
SPECIFICATIONS

DIAMOND POUF



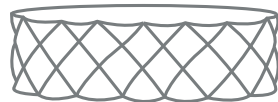
DIAMOND POUF 1

DIMENSIONS: W 20.5
(in) D 20.5
H 19.5



DIAMOND POUF 2

DIMENSIONS: W 32.0
(in) D 32.0
H 15.0



DIAMOND POUF 3

DIMENSIONS: W 48.5
(in) D 48.5
H 15.0

FLEXPLUS® COATING



Yellow



Saffron



Orange



Red



Pink



Purple



Light Blue



Ultramarine



Dark Blue



Teal



Light Green



Green



Beige



Camel



White



Silver



Mid Grey



Dark Grey



Anthracite



Black



Custom

MATERIAL:

Coated foam
MDF base with nylon glides

APPLICATIONS:

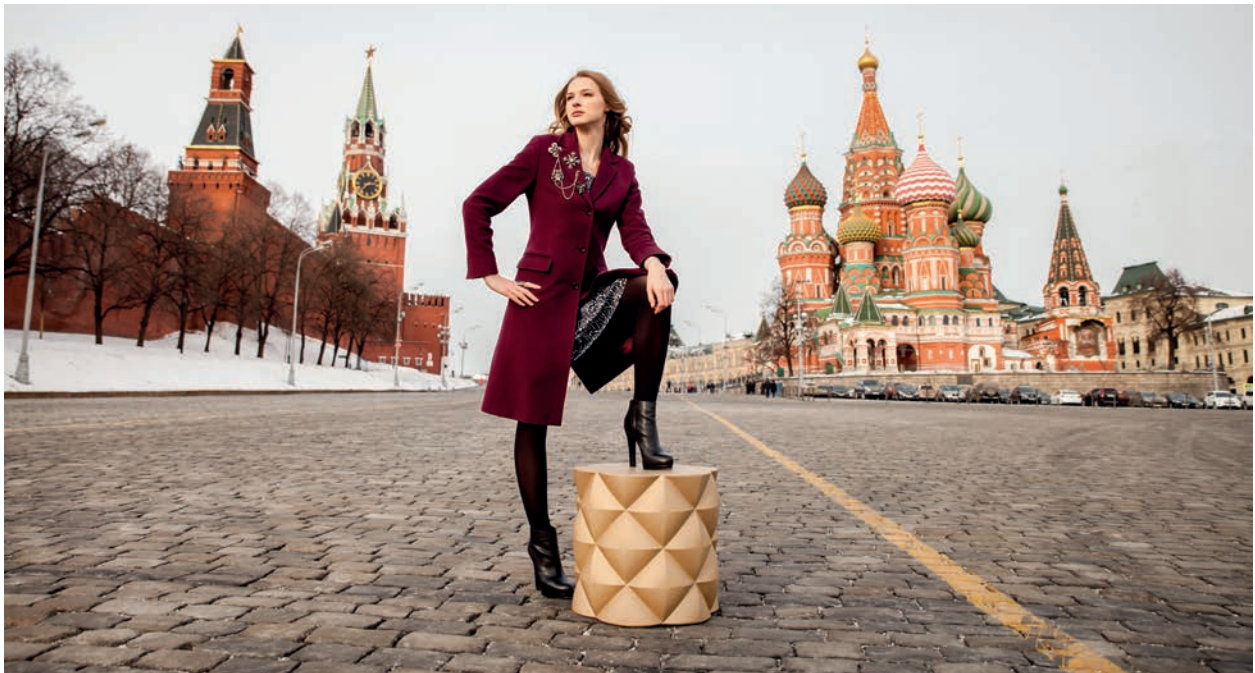
Indoor
Outdoor (requires wood base with glides)
Education (K-12, Higher Ed)
Healthcare • Public Care
Hospitality
Library
Office • Corporate
Public Space
Residential
Retail
Sports Facility
Third Space

DESIGNER PIETER JAMART





Shown Above: Diamond Pouf 1



Shown Above: Diamond Pouf 1

