

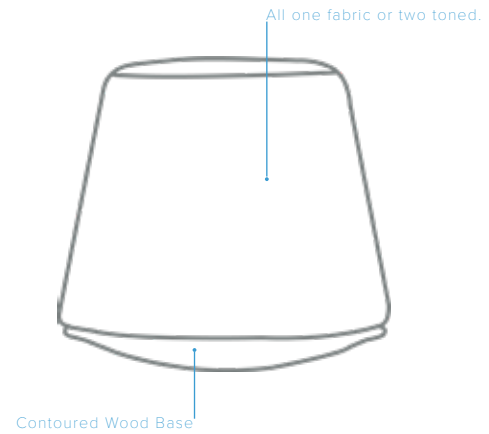
AXIS



SPECIFICATIONS

AXIS

DIMENSIONS: (in)	W	23.0
	D	23.0
	H	20.0
	SH	20.0
	SD	16.0
MATERIALS:	Base - birch plywood	
	Cushion - upholstered foam	
COM FABRIC:	LY	2.0
APPLICATIONS:	Indoor	
	Education (K-12, Higher Ed)	
	Healthcare • Public Care	
	Hospitality	
	Library	
	Office • Corporate	
	Public Space	
	Residential	
Retail		
Third Sapce		



ZONE MAGIC.



Option 1 - Solid



Option 3 - two fabric zones,
side pull matches side panel.



Option 2 - two fabric zones,
side pull matches top panel.

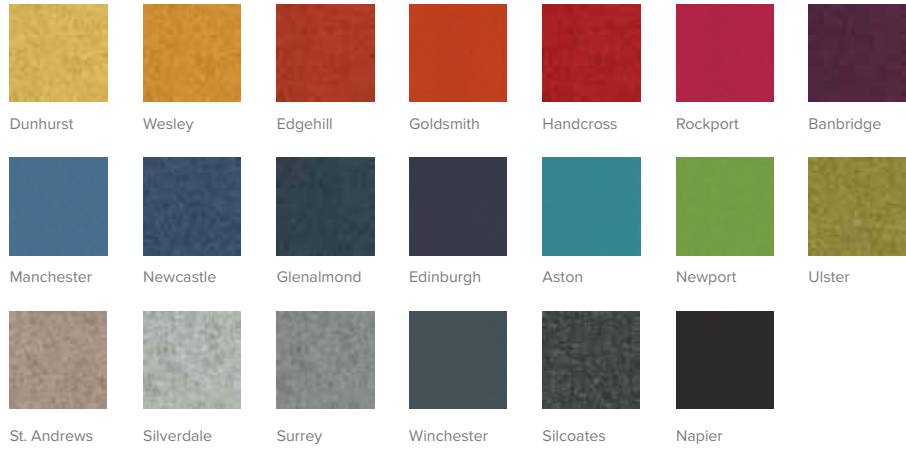
DESIGNER

SIXINCH North America

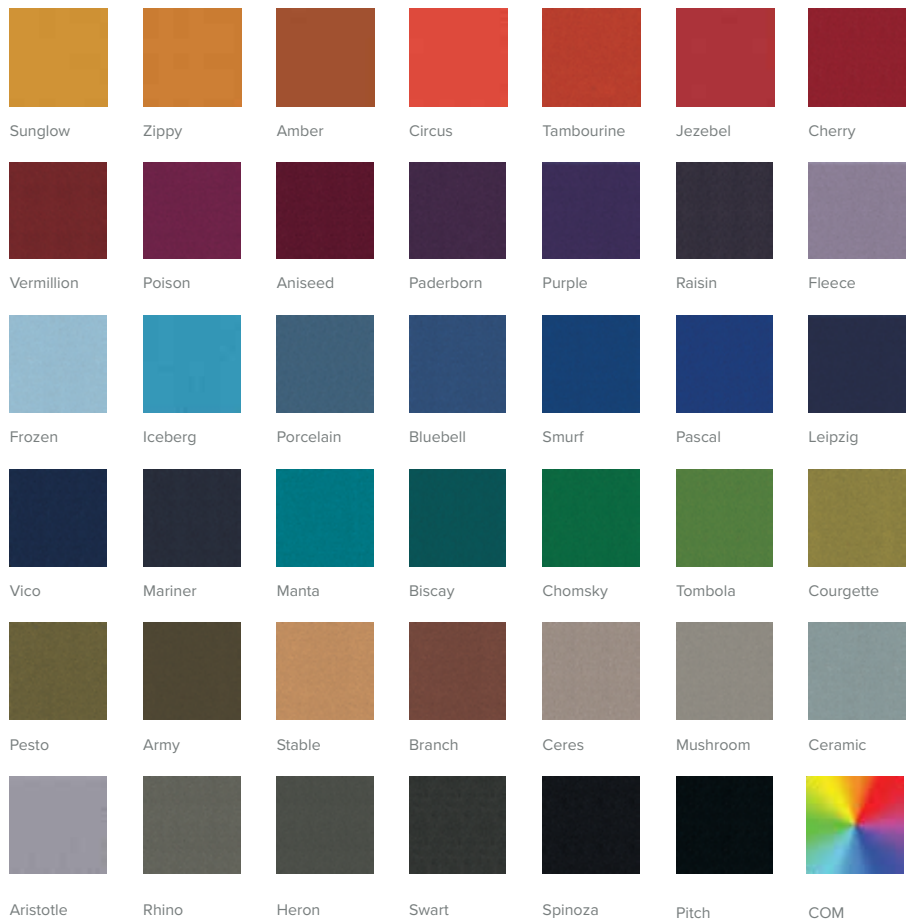


 **sixinch**[®]

UPHOLSTERY
CAMIRA BLAZER



UPHOLSTERY
CAMIRA AQUARIUS





Shown Above: Axis stools



Shown Above: Axis stool

